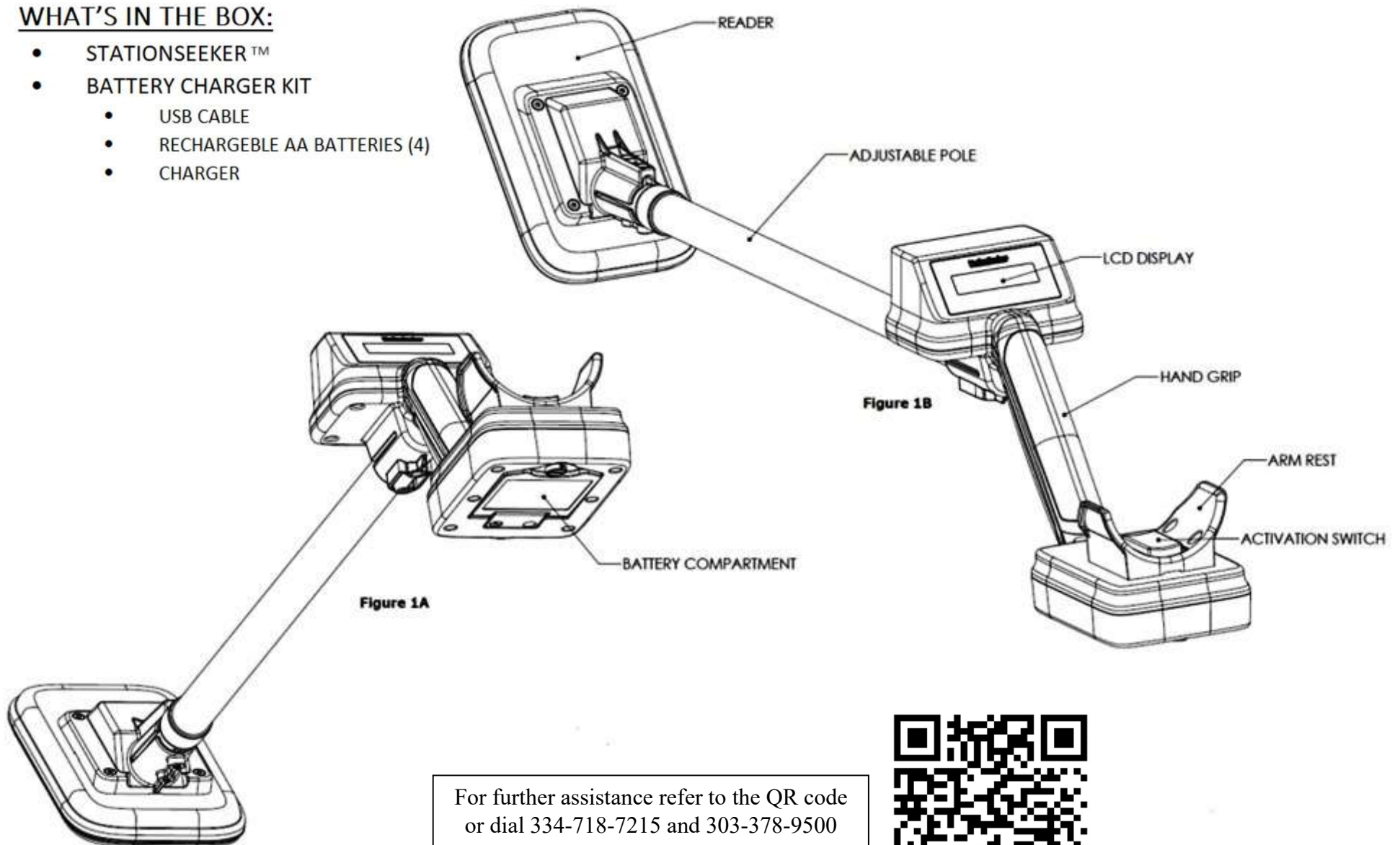


StationSeeker™ Quick Start Guide

WHAT'S IN THE BOX:

- STATIONSEEKER™
- BATTERY CHARGER KIT
 - USB CABLE
 - RECHARGEABLE AA BATTERIES (4)
 - CHARGER



For further assistance refer to the QR code
or dial 334-718-7215 and 303-378-9500
email: StationSeeker@rfidinc.com



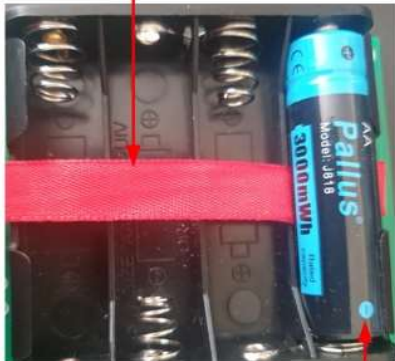
Battery kit, contains 4 each 'AA' Li-ion batteries, charger, USB cable (optional), instructions, and a box.

Battery Notes:

1. Battery kit you have may not be exact, this is a representation of a battery kit
2. Batteries are made of Li-ion and are rechargeable, the specifications on each are 1.5vDC @ 2000mAh (or better)
3. Batteries take about 4 hours to fully charge, depending on your charging plug
4. Standard 1.5vDC Alkaline batteries can be used in emergency



Battery removal strap, lay down first, easier to remove batteries



Batteries, when inserting, note the '-' sign toward spring

Extension pole lock, turn counterclockwise to loosen

Battery compartment, holds 4 each 'AA' batteries

Turn screw counterclockwise to open battery compartment



Extension pole, marked every inch for convenience



LCD display, displays events when activated



Hand grip, grip for holding StationSeeker stable



Activation Switch, engages when operator holds the unit